

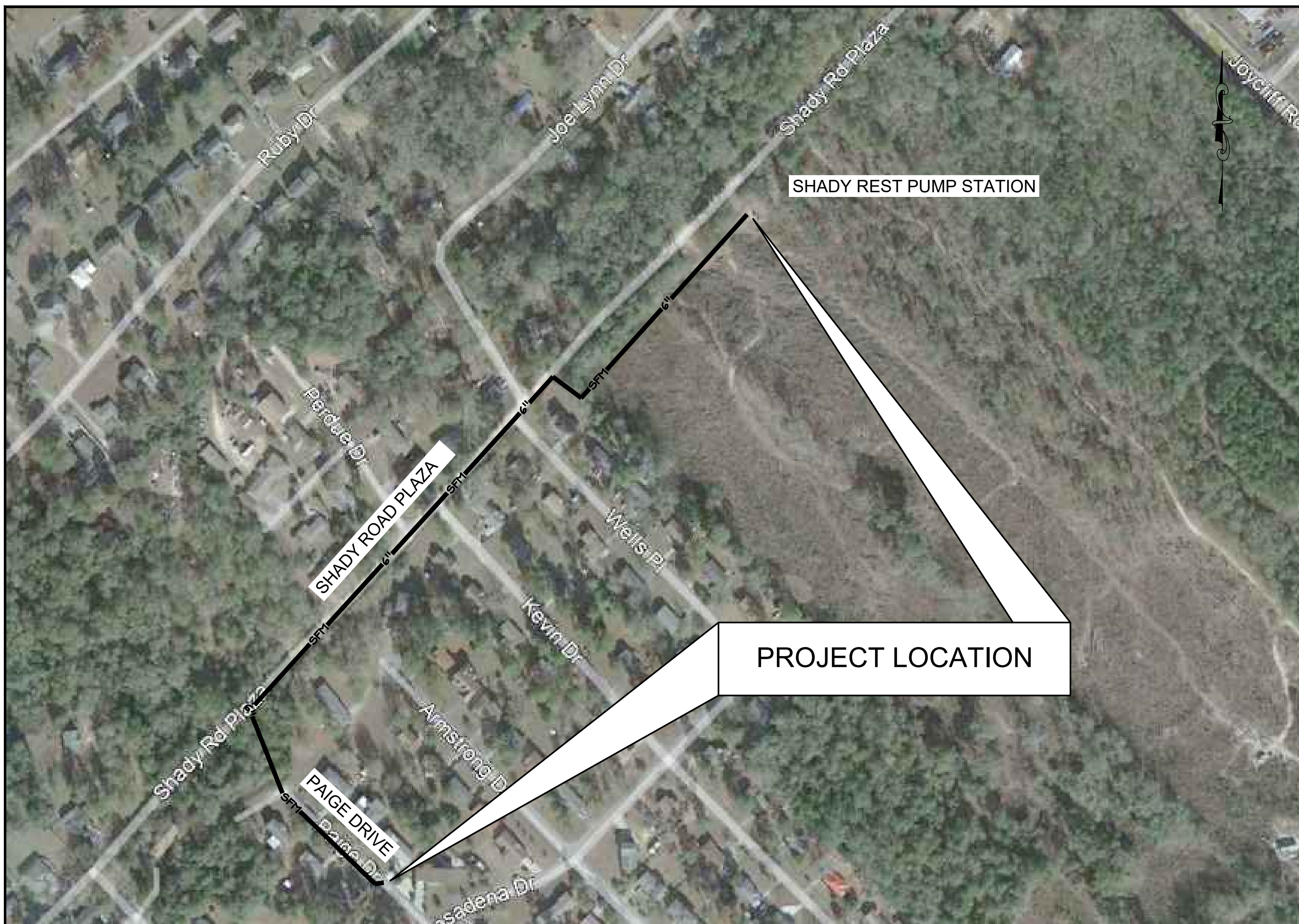
SHADY REST PUMP STATION STATION 6" SANITARY SEWER FORCE MAIN REPLACEMENT FOR THE MACON WATER AUTHORITY



Macon Water Authority

537 HEMLOCK STREET
Macon, GA 31202-0108
(478) 464-5635 * Fax (478) 738-3864

AUGUST 29, 2024



PROJECT LOCATION

PROJECT LOCATION

NOTIFICATION CONTACTS

Owner and 24-Hour Contact
Joel Herndon, Chief Inspector
Macon Water Authority
537 Hemlock Street
Macon, GA 31202
Phone: 478-464-5639
Email: jherndon@maconwater.org

Engineer
Don L. Carter, P.E.
Carter Engineering Group
6310 Peake Road, Suite 200
Macon, GA 31210
Office: 478-219-2600
Email: dcarter@carterenggrp.com

UTILITY CONTACTS

Gas
Cheryl Treadway, Account Executive, New Business Development
AGL Resources (Local Office)
5472 New Forsyth Rd, Macon, GA 31210
Local Office: (478) 476-2230
Cell: 404-391-3142
Email: Cheryl.treadway@aglresources.com

Electricity
Georgia Power
960 Key Street
Macon, GA 31204
Office: 888-655-5888

Telephone/Cable
OSP-Planning & Design Engineering
AT&T
1630 Eisenhower Parkway-Room 260
Macon, GA 31206
Phone: 478-788-1040
Email: mr876@att.com

Water and Sewer
Joel Herndon, Chief Inspector
Macon Water Authority
537 Hemlock Street
Macon, GA 31202
Phone: 478-464-5639
Email: jherndon@maconwater.org

CONSTRUCTION NOTES

- CONTRACTOR WILL BE WORKING IN TEMPORARY CONSTRUCTION EASEMENTS, PERMANENT EASEMENTS, AND COUNTY RIGHT-OF-WAYS. CONTRACTOR SHALL BE RESPONSIBLE FOR ALL CLEARING AND GRUBBING OF EASEMENTS AND REMOVAL OF ALL DEBRIS INCLUDING STUMPS, BLAST ROCK, ETC. NO BURIAL OF CLEARED MATERIALS WILL BE ALLOWED.
- CONTRACTOR SHALL REMOVE ALL DEBRIS AND HAVE SOIL EROSION CONTROL MEASURES IN PLACE BEFORE CONSTRUCTIONS BEGINS.
- CONTRACTOR TO NOTIFY UTILITY PROTECTION AGENCY 72 HOURS PRIOR TO START OF WORK. PHONE 811. ALL UTILITY COMPANIES WHICH HAVE FACILITIES IN THE CONSTRUCTION AREA (TELEPHONE, ELECTRIC, ETC.) SHALL BE CONTACTED BY THE CONTRACTOR PRIOR TO THE BEGINNING OF CONSTRUCTION.
- THE CONTRACTOR SHALL TAKE ALL NECESSARY PRECAUTIONS TO PREVENT ANY DISRUPTIONS OF UTILITY SERVICE. ANY UTILITIES DAMAGED MUST BE REPAIRED THE SAME DAY, UNLESS WRITTEN PERMISSION FROM UTILITY OWNER IS GIVEN.
- EXISTING UTILITY LINES SHOWN ARE APPROXIMATE LOCATIONS ONLY. THE CONTRACTOR SHALL FIELD VERIFY ALL EXISTING UTILITY LINE LOCATIONS PRIOR TO CONSTRUCTION. ANY DEVIATIONS FROM THE DESIGN LOCATION SHALL BE REPORTED TO THE ENGINEER PRIOR TO CONSTRUCTION. DAMAGE TO EXISTING UTILITY LINES RESULTING FROM THE CONTRACTOR'S ACTIONS SHALL BE REPAIRED AT THE CONTRACTOR'S EXPENSE. HE SHALL, AT HIS OWN EXPENSE, REPLACE OR REPAIR THE UTILITIES TO THEIR ORIGINAL CONDITION AND QUALITY, AS APPROVED BY THE CLIENT AND REPRESENTATIVE OF THE APPROPRIATE UTILITY COMPANY. SHOULD THE DAMAGED UTILITY LINE REQUIRE REPAIR BY THE RESPECTIVE UTILITY COMPANY, THE CONTRACTOR SHALL BE RESPONSIBLE FOR PAYING ALL COSTS ASSOCIATED WITH THE REPAIR INCLUDING FINES AND ASSESSMENTS IMPOSED BY UTILITY COMPANY. CONTRACTOR SHALL NOTIFY ELECTRIC POWER PROVIDER 5 BUSINESS DAYS IN ADVANCE OF WORK ADJACENT TO POWER POLES. COORDINATE WITH UTILITY PROVIDER TO REMOVE OR RELOCATE UTILITY MAINS AND POLES AND PAY ALL ASSOCIATED COSTS.
- WHEN CONSTRUCTION INVOLVES THE REMOVAL OF FENCE, POLES, MAILBOXES, SIGNS, SIDEWALKS, DRIVEWAYS, DRIVEWAY CULVERTS, TEMPORARY OR FIXED STRUCTURES, THE CONTRACTOR, AT HIS EXPENSE, SHALL PROVIDE FOR TEMPORARY ACCESS SERVICE OR CONTAINMENT TO THE AFFECTED PROPERTY. HE SHALL REPLACE SUCH ITEMS WITH SIMILAR OR BETTER MATERIALS AS SOON AS PRACTICAL, OR AS DIRECTED BY THE ENGINEER AND ALL SIGNAGE, ALL UTILITY COMPANIES WHICH HAVE FACILITIES IN THE CONSTRUCTION AREA (TELEPHONE, ELECTRIC, ETC.) SHALL BE CONTACTED BY THE CONTRACTOR PRIOR TO THE BEGINNING OF CONSTRUCTION.
- PEDESTRIAN AND LOCAL VEHICULAR TRAFFIC SHALL BE MAINTAINED AT ALL TIMES DURING CONSTRUCTION. SAFETY DEVICES AND FLAGMEN SHALL BE PROVIDED BY THE CONTRACTOR, AT HIS EXPENSE. IF IT SHOULD BE NECESSARY, WRITTEN PERMISSION TO CLOSE THE CONSTRUCTION AREA TO TRAFFIC MUST BE OBTAINED FROM THE APPROPRIATE GOVERNMENT AGENCY PRIOR TO ANY STREET CLOSING. ALL CONSTRUCTION SIGNAGE, LIGHTED BARRIERS, ETC. SHALL BE INSTALLED PRIOR TO BEGINNING CONSTRUCTION.
- ALL CONSTRUCTION STAKING SHALL BE BY THE CONTRACTOR, AT HIS EXPENSE. STAKING OF EASEMENT AND CLEARING LIMITS AND NEW CONSTRUCTION SHALL BE PERFORMED BY PROFESSIONAL SURVEYOR LICENSED IN GEORGIA.
- ALL PROPERTY LINES ARE BASED ON DATA PROVIDED BY FIELD SURVEY DATA.
- CONTRACTOR SHALL MAINTAIN FIELD "AS-BUILT" DRAWINGS AND SHALL MEASURE AND SHOW LOCATION OF ALL MANHOLES, GRAVITY MAINS, RIM/INVERT ELEVATIONS, ETC.
- CONTRACTOR SHALL MATCH EXISTING LAWN AND GRASS TYPES WHEN REPAIRING DISTURBED AREAS.
- ALL CROSS DRAINS AND DRIVEWAY CULVERTS MUST REMAIN OPEN AT ALL TIMES. CONTRACTOR SHALL BE RESPONSIBLE FOR ANY DAMAGE TO DRAINS AND CULVERTS.
- CONTRACTOR SHALL PERFORM CONSTRUCTION IN A MANNER THAT WILL ALLOW VEHICULAR ACCESS TO EACH HOME OR BUSINESS DURING CONSTRUCTION.
- ALL EROSION AND SEDIMENTATION CONTROL SHALL BE THE RESPONSIBILITY OF THE CONTRACTOR AND SHALL BE AS INDICATED ON THE PLANS AND AS DIRECTED BY THE ENGINEER.
- A MINIMUM OF 10' OF HORIZONTAL SEPARATION SHALL BE MAINTAINED BETWEEN WATER & SEWER MAINS. A MINIMUM OF 18" VERTICAL SEPARATION SHALL BE MAINTAINED AT ALL CROSSINGS OF WATER & SEWER MAINS.
- THE CONTRACTOR SHALL FURNISH MATERIALS AND MAKE THE CONNECTION TO ALL EXISTING PIPE LINES.
- THE CONTRACTOR SHALL BEAR ALL COST OF WATER USED FOR FLUSHING AND TESTING REQUIRED BY THE SPECIFICATIONS. PROVISIONS TO PURCHASE SAID WATER FROM A SUPPLIER APPROVED OF BY THE ENGINEER.
- ALL REQUIRED FITTINGS ARE NOT NECESSARILY SHOWN ON THESE DRAWINGS. CONTRACTOR SHALL FURNISH AND SUPPLY ALL FITTINGS NECESSARY TO CONSTRUCT GRAVITY SEWER MAIN.
- BEFORE CONSTRUCTION BEGINS, THE CONTRACTOR SHALL PROVIDE THE OWNER AND ENGINEER THE CONTACT INFORMATION OF A PERSON WHO WILL BE AVAILABLE 24 HOURS A DAY TO CONTACT IN CASE OF EMERGENCY.
- CONTRACTOR TO SAW-CUT EXISTING ASPHALT TO PROVIDE NEAT EDGE FOR PATCHING ON ALL STREETS (SEE DETAIL CLASS 'A' UTILITY PATCH DETAIL)
- ALL CONSTRUCTION MATERIALS, METHODS AND INSTALLATION SHALL BE IN ACCORDANCE WITH MACON WATER AUTHORITY STANDARDS AND SPECIFICATIONS.
- CONTRACTOR SHALL NOTIFY MWA CHIEF INSPECTOR, JOEL HERNDON, 478-464-5639, A MINIMUM OF 72 HOURS PRIOR TO BEGINNING CONSTRUCTION.
- MEANS AND METHODS FOR CONSTRUCTION ARE UP TO THE BIDDING CONTRACTOR AND HE/SHE WILL BE FULLY RESPONSIBLE FOR ALL MATERIALS, EQUIPMENT, LABOR, TEMPORARY POWER, TIE-INS WHERE BYPASS PIPING AND BYPASS PUMPING (INCLUDING FUEL COSTS) IS REQUIRED TO MAINTAIN OPERATION OF THE SANITARY SEWER SYSTEM. BYPASS PUMPING SHALL INCLUDE NOISE ATTENUATION AS SUCH TO AVOID EXCESS SOUND DURING OPERATION AS WELL AS AN AUTO-DIALER TO ALERT THE CONTRACTOR AND MWA IN THE EVENT OF BYPASS PUMP FAILURE.

LEGEND

DESCRIPTION	EXISTING	NEW
PROPERTY LINE	---	---
CONTOUR LINE	---450---	---
POWER POLE	⊗	⊗
LIGHT POLE	◇	◇
OVERHEAD POWER	—O—	—O—
HIGH VOLTAGE LINE	—HVL—	—HVL—
UNDERGROUND ELECTRICAL	—E—	—E—
UNDERGROUND TELEPHONE	—T—	—T—
UNDERGROUND FIBER OPTIC	—FOC—	—FOC—
GAS LINE	—G—	—G—
WATER LINE	—W—	—W—
FIRE PROTECTION MAIN	—FP—	—FP—
DOMESTIC WATER	—DW—	—DW—
IRRIGATION MAIN	—IR—	—IR—
FIRE HYDRANT	⊕	⊕
WATER VALVE	⊕	⊕
SAN. SEWER W/ MANHOLE	—SAN—	—SAN—
CLEANOUT	⊕	⊕
DRAIN INLET	⊕	⊕
CATCH BASIN	⊕	⊕
D.O.T. STD. 1033D	⊕	⊕
STORM DRAIN	—SD—	—SD—
SILT FENCE & TYPE	+	+
SPOT ELEVATION	⊕	⊕
CONCRETE PAVING	▒	▒
CONCRETE SIDEWALKS	▒	▒
PVC IRRIGATION SLEEVE	—PVC—	—PVC—
SOIL BOUNDARY LINE	—SBL—	—SBL—
SOIL TYPE	—ST—	—ST—
FENCE	—F—	—F—
FENCE W/ 3 STRANDS OF BARBED WIRE	—F3—	—F3—
NOT IN CONTRACT	---	---
TREES TO BE REMOVED	⊗	⊗

INDEX TO DRAWINGS

SHEET NO.	TITLE
-	COVER SHEET
C1	SANITARY SEWER FORCE MAIN PLAN AND PROFILE
C2	SANITARY SEWER FORCE MAIN PLAN AND PROFILE
C3	SANITARY SEWER FORCE MAIN PLAN AND PROFILE
C4	EROSION AND SEDIMENT CONTROL PLAN
C5	EROSION AND SEDIMENT CONTROL PLAN
C6	EROSION AND SEDIMENT CONTROL DETAILS
C7	SANITARY SEWER DETAILS
C8	MISCELLANEOUS DETAILS

PROJECT NARRATIVE

THIS PROJECT CONSISTS OF FURNISHING AND INSTALLING APPROXIMATELY 2,120 L.F. OF 6" SANITARY SEWER FORCE MAIN AT THE SHADY REST PUMP STATION.

PROJECT QUANTITIES

6" C900 DR18 PVC FORCE MAIN: 2,120 L.F.

BENCHMARK INFORMATION

N/A



Contact 811 before you dig.



